



GIRTON COLLEGE CHAPEL

MICHAELMAS TERM 2023



SERMON THEME: SIGNS OF LIFE

WHO'S WHO?

THE CHAPLAIN: REV'D DR TIM BONIFACE



Rev'd Dr Boniface is the College Chaplain. As well as overseeing the life of the Chapel and leading the worship, Tim is available to all members of College, and is happy to see people in confidence for any reason, religious or not. He is part-time, but is around College regularly in full term.

Do feel free to drop in to Tim's office (D4a). He is available to see you in person, talk on the phone, on Zoom, or to contact by email if that is best for you. The Porter's Lodge can also contact Tim in an emergency. (chaplain@girton.cam.ac.uk)

DIRECTOR OF CHAPEL MUSIC: DR GARETH WILSON

Dr Wilson (**gw377**) oversees the musical life of the Chapel and directs the College Chapel Choir.

He is assisted by the Organ Scholars Gabriel Kennedy (**gk473**) and Ben Nolan (**bn314**).

CHAPEL WARDENS:

ALEXANDRA BATES, GEORGE QUARTON, ELLIE RICHARDSON, ROSIE RICE

Girton's Chapel Wardens assist the Chaplain in all practical matters relating to Chapel and are a crucial part of the community. Please contact the Chaplain or speak to the Chapel Wardens if you're interested serving as a Chapel Warden yourself, or to explore any other ways in which you might contribute to Chapel life, such as assisting with live streaming, reading or leading prayers.

PRIEST WITH PERMISSION TO OFFICIATE: REV'D DR CHARLIE BELL

Rev'd Dr Bell, Official Fellow and Praelector, can be contacted by email (**cb561**).

LAY MINISTER: DR ROLAND RANDALL

Dr Randall, Life Fellow and Diocesan Reader, can be contacted by email (**rer10**).

STUDENT CHRISTIAN ORGANISATIONS:

Girton Christian Union Rep:
Fin Di Castiglione (**fpd23**)

Fisher House (Roman Catholic) Rep:
Sofia Miccolis (**slm202**)

Cambridge University Catholic Chaplaincy:
www.fisherhouse.org.uk

Student Christian Movement:
www.movement.org.uk

The Chaplain also has details of student organisations of other faiths, and will gladly assist in helping anyone seeking support on their own faith journey.

THE CHAPEL

All are welcome in the College Chapel. As well as a place where services take place, it is a space for everyone in the College community – of all faiths or none – for quiet reflection, prayer or meditation. There are sometimes musical rehearsals in Chapel, but it is mostly free and peaceful. Please do make use of this beautiful space at any time.

Services in the Chapel, mostly in the Anglican Christian tradition, are for anybody who wants to come – from whatever background or tradition. The Chapel community fosters a welcoming and inclusive culture, and the services can provide a welcome stability and rhythm amongst the busyness of College life.

Any groups wishing to use the Chapel for rehearsals or meetings must obtain direct permission from the Chaplain. Most things are possible, and the Chaplain very much welcomes appropriate use of the space, but this must be arranged beforehand to prevent clashes. Whilst every effort is made to accommodate requests, please be aware that the Chapel is not simply a practice room and permission is not guaranteed.

PRAYER AND MEDITATION ROOM

Girton has a prayer and meditation room, available for use by any member of the College at any time. The room is simple, neutral and comfortable, intended for use by people of all faiths or of none. Basic guidelines for its use are posted outside. The room is overseen by the Junior Bursar and the Chaplain. Please request the key from the Porters if you wish to use it. If you need to make regular bookings, please email prayerroom@girton.cam.ac.uk.

MIDWEEK SERVICES

CHORAL CANDLELIT COMPLINE

TUESDAY 10, 24, AND 31 OCTOBER, 14 AND 21 NOVEMBER AT 9:15 PM

Compline services will include Plainchant and reflective music sung by the Choir at Girton College some Tuesdays during Full Term. An ancient service of great beauty – take some time to unwind and be still for 20 minutes in the candlelight.

No demands. No sermon.

.....

TUESDAY MORNING PRAYER

TUESDAYS AT 8:15 AM

A short said service of Morning Prayer in the contemporary Anglican tradition, led by the College Bursar, who is also an ordinand (training to be ordained) in the Church of England.

.....

LATE EVENING COMMUNION

THURSDAY 16 NOVEMBER AT 9:15 PM

A gentle candlelit service of communion with a short informal reflection from the Chaplain or someone else. All are welcome to this gathering, which offers a deep but relaxed end to the day in a beautiful calm space. Perfect if you've never been to a communion service before.

.....

From time to time there are other services in term. The Chaplain sends out a weekly email detailing these. If you would like to be on a more regular 'services reminder' email from the Chapel, please email chaplain@girton.cam.ac.uk with your request and you can be added to the list.

SPECIAL SERVICES

COMMEMORATION OF BENEFACTORS CEREMONY

SATURDAY 14 OCTOBER AT 6:00 PM

Speaker: Rev'd Dr Tim Boniface, College Chaplain

CHORAL EVENSONG: ALL SUNDAYS IN FULL TERM

AT 5:30 PM (UNLESS OTHERWISE STATED)

Evensong in English dates back to the time of the Reformation, but many elements draw on the ancient monastic 'offices' or 'hours' (regular prayers at certain times of day), especially to the office of vespers (evening prayer). The 1662 Book of Common Prayer provides the form of words and ceremonies that the Church of England uses to this day, although the service first appeared in this form in 1549. Congregations are drawn to the rhythms of prayer that have sustained worshippers down the centuries. Evensong at Girton is 'choral', meaning that key elements of the service are sung to beautiful choral settings by our College Choir.

Choral evensong also includes a sermon of around 10 - 15 minutes. Sermons often follow a theme for the term, allowing for in depth exploration of certain issues and topics from many different angles. In addition to sermons from the Chaplain, we often welcome notable guests preachers who bring valuable perspectives from their own life and context.

The sermons at evensong this term explore the theme of 7 Signs in the Gospel of John.

8
OCT

INTRODUCTORY EVENSONG: SIGNS OF ABUNDANCE

Speaker: Rev'd Dr Tim Boniface, College

Readings: Isaiah 55:1-9, John 2:1-11

Music: *Introit - I give you a new commandment (Robert Johnson)*
Responses - David Hurd
Canticles - Evening Service in C (Charles Villiers Stanford)
Anthem - Save us, O Lord (Edward Bairstow)

15
OCT

SIGNS OF FAITH AND POWER

Speaker: Rev'd Dr Tim Boniface, College Chaplain

Readings: Exodus 3:1-12, John 6:16-21

Music: *Introit - Tebe Poyem (Dmitri Bortniansky)*
Responses - David Hurd
Canticles - Evening Service in A flat (Basil Harwood)
Anthem - Peace I leave with you (Alice Rivers)

22
OCT

A SERVICE OF HOLY COMMUNION: SIGNS THAT FEED

Speaker: Dr Karen O'Donnell, Director of Studies, Westcott House

Readings: Ezekiel 16:1-19, John 6:22-34

Music: *Introit - Oh, Taste and See (Gabriel Kennedy)*
Eucharist setting - Missa Sancti Jacobi (Gareth Wilson)
Anthem - With Great Delight (Alice Rivers)

29
OCT

SIGNS AND SUFFERING

Speaker: Rev'd Dr Tim Boniface, College Chaplain

Readings: Job 11:1-12:6, John 9:1-12

Music: *Introit - How Beautiful are the Feet of Him (Julia Perry)*
Responses - David Hurd
Canticles - Truro Service (Gabriel Jackson)
Anthem - The Lord is My Strength (Samuel Coleridge-Taylor)

5

NOV

ALL SOULS' COMMEMORATIVE EVENSONG: THE SIGN OF LIFE

Speaker: Professor David Ford OBE, Regius Professor of Divinity
Emeritus, University of Cambridge

Readings: John 11:1-27, John 11:28-44

Music: *Introit - Locus Iste (Robin Burlton)*
Responses - David Hurd
Canticles - Evening Service in D minor (Thomas Walmisley)
Anthem - A Prayer (Ken Burton)

12

NOV

REMEMBRANCE SUNDAY

Speaker: Dr Simone Maghenzani, Dame Marilyn Strathern Associate
Professor in History, Director of Studies in History

Readings: Micah 4:1-5, Matthew 5:3-11

Music: *Introit - Beatitude ii (Gareth Wilson)*
Responses - David Hurd
Canticles - Truro Service (Dobrinka Tabakova)
Anthem - Thou wilt keep him in perfect peace (Samuel Sebastian Wesley)

19

NOV

SIGNS OF HEALING

Speaker: Very Rev'd Jo Kelly Moore, Dean of St Albans

Readings: Jeremiah 17:19-23, John 5:1-11

Music: *Introit - Lord, For Thy Tender Mercy's Sake (Richard Farrant)*
Responses - Humphrey Clucas
Canticles - Evening Service in B Minor (T.Tertius Noble)
Anthem - Ave verum corpus (Wolfgang Amadeus Mozart)

Music from the combined choirs of Ardingly College & Girton College

26

NOV

ADVENT TO CHRISTMAS CAROL SERVICE

A service of Advent and Christmas Carols and music by the Choir,
preceded by tea in the Stanley Library from 4.30pm

Music to include:

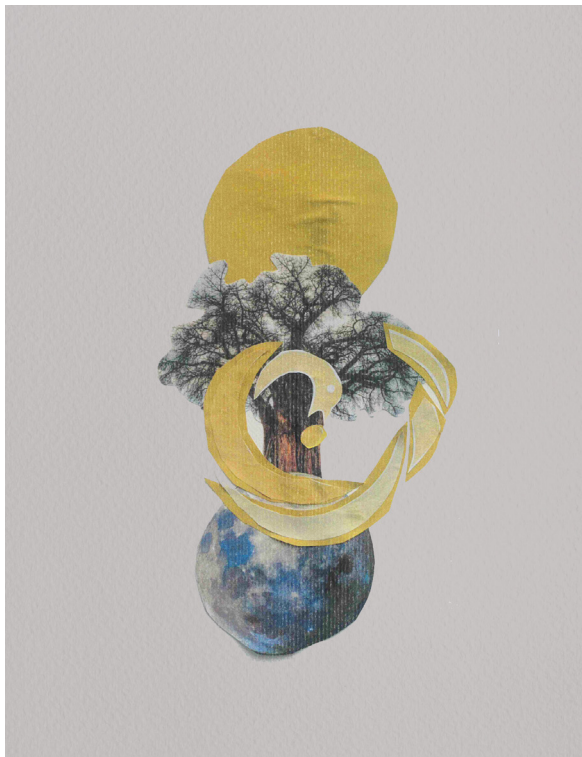
There is no Rose (Thomas Wilson)
Bethlehem's Star (Alice Tegner arr. Gareth Wilson)
God is with us (Alice Rivers)

This service is usually very well attended, and we recommend arriving
in plenty of time.

IMPORTANT INFORMATION

- **CHAPEL WEBPAGE**
www.girton.cam.ac.uk/life-girton/chapel-faith
- **YOUTUBE (FOR STREAMED SERVICES)**
www.youtube.com/@girtoncollegechapel
- **FACEBOOK (GIRTON COLLEGE CHAPEL CHOIR)**
www.facebook.com/GirtonChoir
- **TWITTER (GIRTON COLLEGE CHAPEL CHOIR)**
[@GirtonChoir](https://twitter.com/GirtonChoir)

THIS TERM'S COVER ART



The cover art is 'Sankofa' ('Go back and get it') by Theodora Songhai, from an Akan proverb, 'it is not wrong to go back for that which you have forgotten', or, in order to move forward, you must look back.

**CHARITY FOR MICHAELMAS TERM
JIMMY'S NIGHT SHELTER CAMBRIDGE**



Jimmy's opened in 1995 as Cambridge's first all year round night shelter and now offers a much wider range of support. It remains one of the most prominent organisations within the community supporting people who have been rough sleeping in the city.

The organisation was inspired by Jim Dilley, who spent much of his life sleeping rough. In the last few years of his life, 'home' for Jim was under the bridge at Junction 13 of the M11. That bridge is still represented in Jimmy's logo.

Whilst Jimmy's has undergone several significant transformations since it opened, its ethos has remained the same – placing people at the heart of the support we provide.

Valuing and respecting everyone who needs our services, Jimmy's staff work with each person to provide options, tools and skills to support them on their journey, developing a tailored pathway to independence.

Through our many years of experience of working with vulnerable individuals we recognise the need for everyone to be treated in a confidential manner and with respect, compassion, and empathy.

For more information visit:

- Website: www.jimmyscambridge.org.uk
- Twitter: [@jimmyscambridge](https://twitter.com/jimmyscambridge)
- Facebook: www.facebook.com/jimmysincambridge
- Instagram: www.instagram.com/jimmyscambridge

You can give to the Chapel charity either by cash or card following services or by emailing the Chaplain.

