



CAMBRIDGE INTERNATIONAL FRESHERS' GUIDE

SU
INTERNATIONAL
STUDENTS'
CAMPAIGN

CHAIR'S FOREWORD

Dear International Freshers,

Many congratulations on meeting your offers and joining the Cambridge community! I hope you are doing well and feeling excited. The International Students' Campaign (ISC) Committee 2022/23 looks forward to welcoming you from all across the globe.

I am Bryant Ng, a third year Engineering student at Fitzwilliam and also the current ISC Chair. It has been such a great privilege to have an incredible and proactive team this year. They all have been working very hard for the International Freshers' Week, our events, and campaigns in the upcoming year. In particular, I would like to thank our Freshers Officers Gabrielle Luk and Tobias Poon for all their efforts, time, and meticulous planning for the preparation of this Freshers' Week and this guide. For many of you, the Freshers' Week will mark the beginning of a new chapter of your life and I hope you will meet some new friends who will be your best companions there.

Cambridge might be a new home for many of you in the next 3 years and some of you may have no clue about your next steps after meeting your offer. We understand that these challenges, such as immigration rules, visa wait, or cultural shock, could be very stressful and thus, we have prepared this guide to help you settle down in this new environment as quickly as possible. Our committee are all very nice and friendly people, so do talk to us whenever in need. Our contact information can be found in the guide as well.

Beyond this guide, here are some of the other ways to familiarise yourself with the international community at Cambridge:

- Join the Cambridge University International Freshers 2022 Facebook Group at <https://www.facebook.com/groups/1463940284052004/>,
- Join the International Freshers Facebook Groupchat by contacting any of our committee members.
- Follow our Instagram (@isc_cambridge https://www.instagram.com/isc_cambridge/) and Facebook page at @internationalstudentcampaign (<https://www.facebook.com/internationalstudentcampaign/>).
- Join our WhatsApp Groupchat (<https://chat.whatsapp.com/F8tdmsqyE4GKzyH7izYXwf>)

These pages and groups detail the activities of International Freshers' Week (IFW) and updates on important university announcements and developments. You can also try getting in touch with your country's own student association to meet Cambridge students from your hometown, and get any country-specific information you may need. A detailed list of registered clubs and societies can be found at <https://www.cambridgesu.co.uk/opportunities/societies/>. These societies offer fantastic support to help you make the best out of your Freshers experience and we encourage you to make full use of them!

If you still have any concerns or are curious about life at Cambridge, do check out our social media pages or talk to any of our committee members. See you soon at IFW 2022!

Warm regards,
Bryant Ng
Chair (2022/23)

International Students' Campaign

Chair's Foreword | Page 2

ABOUT ISC

INTERNATIONAL STUDENTS' CAMPAIGN OF CAMBRIDGE STUDENT UNION

ISC serves as the umbrella organisation for all international societies and students at the University of Cambridge. We organise events for internationals, campaign for improvements in international-specific issues, and act as the link between international students and the university!

Find out more, and get in touch!

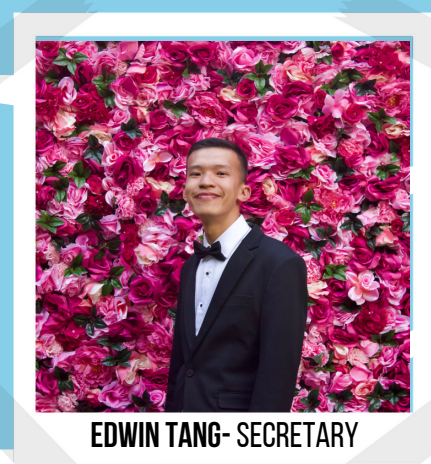


<https://www.facebook.com/internationalstudentcampaign>



@isc_cambridge

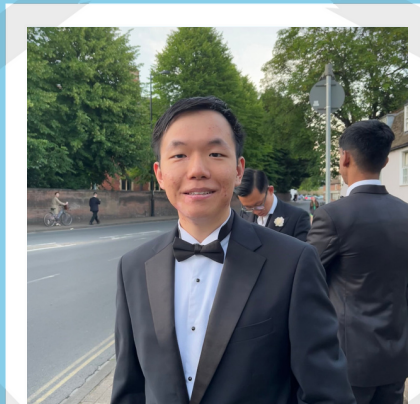
ISC COMMITTEE MEMBERS



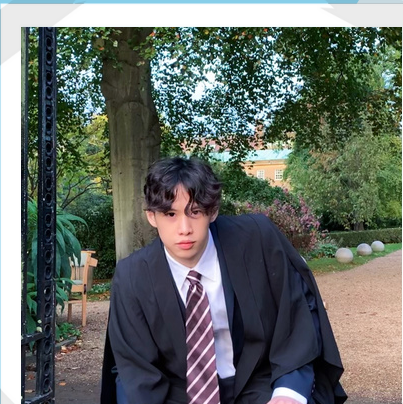
EDWIN TANG - SECRETARY



GABRIELLE DESALBRES - VICE CHAIR (UNDERGRAD)



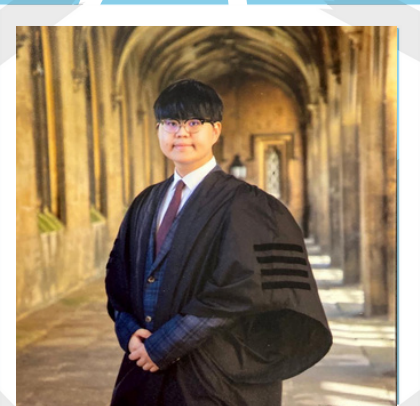
BRYANT NG - CHAIR



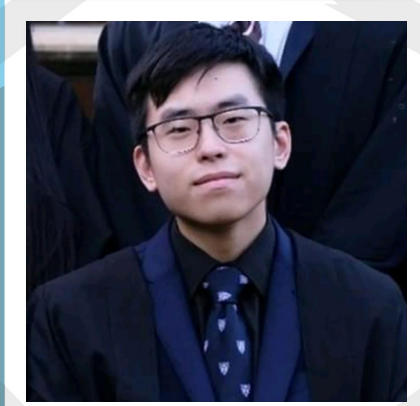
BRYAN TAN - VICE-CHAIR (POSTGRADUATE)



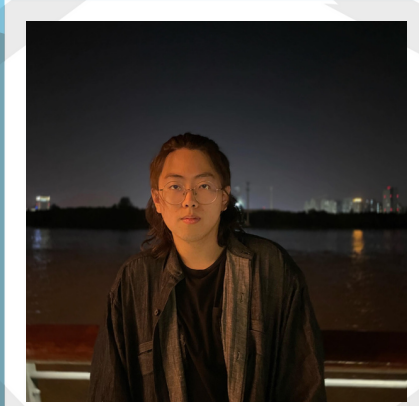
MAGGIE BAO - VICE-CHAIR (POSTGRADUATE)



YOUNGSUN HONG - TREASURER



CHARLES CHAN - COLLEGE COORDINATOR



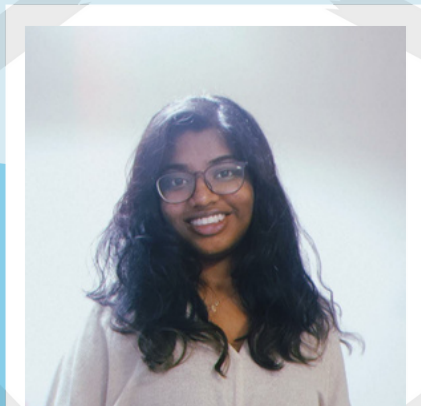
KEVIN DU - SOCIETIES COORDINATOR



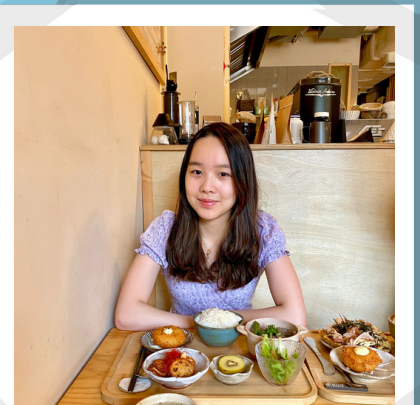
JU YI TAI - PUBLICITY OFFICER



WING LAM NG - ACCESS OFFICER



AACHUDHA SELVA SATHISH -
SOCIALS OFFICER



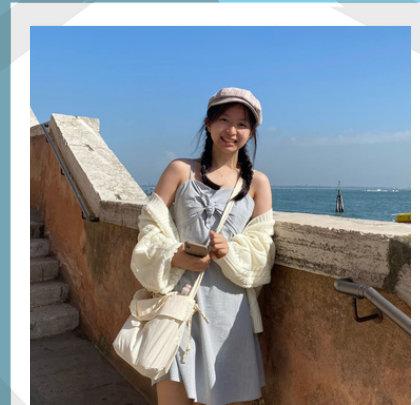
GABRIELLE LUK - FRESHERS OFFICER



TOBIAS POON - FRESHERS OFFICER



GEORGIA WONG - WELFARE OFFICER



HELEN CAI - GENERAL COMMITTEE



ALBA ROSALES - GENERAL COMMITTEE



ANA DOLINAR - GENERAL COMMITTEE

CRSid (from left to right):

first row: ynet2 | gamhd2 | phn23 | bwzt2 | hb552

second row: yh491 | ywcc2 | yd332 | jyt33 | wlw26 | abs56

third row: tngl2 | fwp21 | mkw40 | hxc22 | an583 | amd219

If you have any questions about life in Cambridge as an international student, feel free to contact any of the committee members using our given CRSids. Not sure what a CRSid is? Check out Page 5 of this booklet. For more information about each of the committee members, head to our instagram!

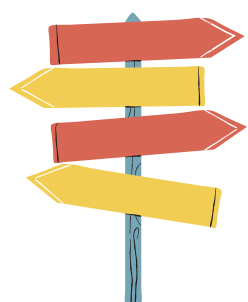
CONTENTS



ONLINE MATTERS

Getting your CRSid
Using your CRSid

5



TRAVELLING

Visa and Immigration
To Cambridge
In and around Cambridge

7



COMMUNICATION

Getting a mobile phone line
Wi-Fi in Cambridge

16



ACCOMMODATION

During International Freshers' Week
During Ordinary Term

18



BANK ACCOUNTS

Various Banks and Branch Locations
Setting Up An Appointment

20



HEALTH AND LIVING

Must-have Items
Registering with a GP

22



INTERNATIONAL FRESHERS' PLANNED ACTIVITIES

International Freshers' Week Schedule
International Families

23



PACKING AND SHOPPING

Things to Bring and Things To Buy
Where To Buy What

26



MENTAL HEALTH AWARENESS

31



GENERAL ACADEMIC INFORMATION

Academics in Cambridge
Term Dates

34

WORDS AND PHRASES IN CAMBRIDGE

36

ONLINE MATTERS

GETTING YOUR CRSID

CRSid stands for “Common Registration Scheme Identifier”. It is a login name used to identify you on any computing system managed by the University’s Information Services, including Raven, Hermes, and Desktop Services. Your CRSid also forms part of your standard Cambridge @cam.ac.uk email address. For example, if you have a question relating to student welfare, you can contact our Welfare Officer, Georgia Wong at mkw40@cam.ac.uk.

Raven - Raven is the University-wide web authentication service. A Raven Login is required to access all of your Cambridge accounts, including Moodle, Hermes, CamSIS, etc. You can access it at: raven.cam.ac.uk.

Outlook - Outlook is where you will access your mail, calendar and more. It is very helpful to download it onto your phone. After resetting your password for the first time, allow up to 3 hours for the change to propagate to the mail server before you can log in. You can access it at outlook.office.com.

FOR NEW UNDERGRADUATES

In late August or early September, before the start of your first year, you will be sent an email from the Student Registry (student.registration@admin.cam.ac.uk OR cambridge.registration@admin.ca.ac.uk) which will contain instructions on how to complete your student registration. Last year, this email was sent out on the 2nd of September 2021, so don’t worry if you haven’t received yours yet. However, in case you don’t receive the email, you can head to <http://www.cambridgestudents.cam.ac.uk/new-students/student-registration> in early September to complete your student registration. Once you complete your registration, you’ll be given a link to collect your CRSid. For more information on setting up your CRSid, please visit: <https://help.uis.cam.ac.uk/downloads/getting-started>.

FOR NEW POSTGRADUATES

“New Postgraduates” refers to students who were not previously undergraduates at Cambridge. If you are a new postgraduate student, you will be able to find out your CRSid and correspondingly your Hermes email address within a few weeks of receiving your offer. To find out your CRSid, head to: jackdaw.cam.ac.uk/mailsearch/newPG.

FOR "OLD" POSTGRADUATES

"Old" Postgraduates refer to students who were previously undergraduates at Cambridge. If you are such a student, you will retain your CRSid and Hermes email address from your undergraduate years. There is no need for you to do anything vis-à-vis your CRSid.

USING YOUR CRSID

FOR CAMSIS

CamSIS is Cambridge's comprehensive system for handling student information, records and transactions. It is the official repository of the student's record from application all the way through to graduation and is the sole source of official University and College transcripts. You can access CamSIS with Raven using your CRSid here: <https://www.camsis.cam.ac.uk/>.

FOR EDUROAM

Eduroam is a Wi-Fi service that allows you to connect your laptop and/or smart phone to the internet while in Cambridge (it should be available in colleges, faculty buildings, and other university departments). It is also accessible on the campuses of most universities in the UK and across Europe. To login to Eduroam, you'll need to collect your network access token (a 16-letter lowercase password) at <https://tokens.csx.cam.ac.uk/>. Do take note that when collecting your token that your "Eduroam identifier" is your CRSid followed by "@cam.ac.uk"; given that the Eduroam network is not limited to Cambridge, your CRSid alone will not be sufficient.

IF YOU NEED A VPN

Residents in certain countries may need a VPN to access Facebook, Google Form, amongst other sites. Cambridge does provide a VPN: <http://www.ucs.cam.ac.uk/vpn>.

TRAVELLING

VISA AND IMMIGRATION

In general, it is recommended that you arrive at Cambridge by the date given as the 'Course start date' in the CAS and definitely by the 'latest arrival date'.

For internationals who are sponsored by the University for a Tier 4 student visa, here are some general guidelines for immigration and arrival. Please note that there may be some changes depending on the approach taken by the UK Government and the University of Cambridge in handling Covid-19. Please always double check for the most updated information. We will strive to communicate such changes to you through various platforms including, but not limited to, Instagram, Facebook, or email.

BEFORE ARRIVAL

If you have applied for your Tier 4 Visa overseas, you will be issued a 30-day entry vignette in your passport which enables you to travel to the UK. You must arrive within the time frame specified in the vignette or apply for an extension at extra cost. This means you cannot enter before the 'valid from' date on your entry vignette or enter the UK as a standard visitor (tourist) before your 'valid from' date and then 'switch' inside the UK to Tier 4.

Bring passport photos - you'll need them for various things in the first weeks.

Remember to check your immigration document for any errors and keep your passport safe!

ON ARRIVAL (AT BORDER CONTROL)

Here is some advice given by the UK Border Force to get through UK border controls as efficiently as possible:

- If you're from a non European Economic Area (EEA) country, complete the landing card given to you during your flight before you arrive at border control.
- Have your passport ready. Remove it from any cover and remember to remove sunglasses and hats.

(cont. on next page)

- Keep information about the course you're studying in your hand luggage. Border Force officers may ask to see this information. This must be in paper copy (it may be useful to keep them in a folder, so you can bring them up quickly during border control). This includes:
 - Your university Confirmation of Acceptance for Studies (CAS) number, as well as any other documents you used for your visa application.
 - Your visa application decision letter (this will have been issued to you to confirm your visa application was successful and specify the collection point for your BRP).
 - Recent bank statements and details of where you are staying.
 - Photocopies of your passport and visa.
- Expect Border Force officers to ask simple questions about your stay in the UK when you arrive at passport control.
- Do not bring in any meat or dairy products from outside the European Union (EU). Check if any food products you wish to bring are restricted by the UK Government.
- There are also restrictions on the amount of tobacco, alcohol and gifts you can bring to the UK. If you exceed your duty-free allowance and do not declare them, all your items could be taken away from you.
- Never bring in counterfeit goods, illegal drugs, offensive weapons or indecent or obscene material.
- You must declare cash of 10,000 Euros or more (or the equivalent in another currency) if you are travelling from a country outside the EU.
- Never give false or misleading information (including forged or counterfeit documents).

Nationals of the following countries will also be able to use the eGates: Australia, Canada, Japan, New Zealand, Singapore, South Korea and the USA. Note, however, that if you use the eGate, you must provide your College with evidence of your date of entry (eg boarding pass), as well as your passport and BRP as your vignette will not have been stamped by a Border Force Officer.

Check with the UK border control's website <https://www.gov.uk/uk-border-control> for the most updated regulations.

ON ARRIVAL (IN CAMBRIDGE)

- Collect your Biometric Residence Permit (BRP) if you have been issued an entry permit in your passport.
 - You may collect your BRP at the University or at the Post Office.
 - To collect it from the University, you must enter the ACL code in the relevant section of your Tier 4 visa application form. This will be provided in an email from the International Student Office following the issuance of your CAS.
 - If you do not use the ACL code and enter a residential or sponsor postcode, you will have to collect your BRP from the Post Office.
- Report to your College Tutorial Office within 7 days of your expected arrival date and
 - Sign for your first registration;
 - Provide your passport and immigration documents (for scanning into your student record); and
 - Provide your contact details.
- Register with the police if you are a national in one of the following countries:

Afghanistan, Algeria, Argentina, Armenia, Azerbaijan, Bahrain, Belarus, Bolivia, Brazil, China, Colombia, Cuba, Egypt, Georgia, Hong Kong SAR, Iran, Iraq, Israel, Jordan, Kazakhstan, Kuwait, Kyrgyzstan, Lebanon, Libya, Moldova, Morocco, North Korea, Oman, Palestine, Peru, Qatar, Russia, Saudi Arabia, Sudan, Syria, Tajikistan, Tunisia, Turkey, Turkmenistan, United Arab Emirates, Ukraine, Uzbekistan, Yemen, Stateless or travelling on a non-national document (i.e. Travel Document).

Again, please note that the above may be slightly different when you actually do arrive given how quickly adjustments to tackle Covid-19 are changing. We will update you through Facebook, Instagram, and e-mail. Please feel free to contact us should you have any questions or concerns.

TRAVELLING TO CAMBRIDGE

BOOKING YOUR FLIGHT

First, you need to book your flight to the UK - typically, most people land in London and travel to Cambridge via train, coach, or taxi. We recommend using <https://www.skyscanner.net/> or other similar sites to find the most affordable flight with the best timing for you. As there are multiple airports in London, we have provided instructions on how to travel from London Heathrow Airport, London Gatwick Airport, and London Stansted Airport to Cambridge. Please also factor in any quarantine time in the UK you might need to undergo when booking your flight.

BY TAXI

You can book a taxi from any of the London Airports to Cambridge online, either from Panther Taxi (www.panthertaxis.co.uk) or CamCab (<http://www.camcab.co.uk/index.php/book/fares>). This is obviously the most convenient way to get to Cambridge if you've never been to the UK before, and are bringing a lot of luggage - of course it is also the most expensive. You can cut costs by travelling with a buddy (or two).

BY TRAIN

GENERAL INFORMATION ABOUT TAKING THE TRAIN TO CAMBRIDGE STATION

If you are confident that your flight will not be delayed, you may buy your train ticket online prior to arriving at the train station (<http://www.nationalrail.co.uk/>). If you do so early, you are likely to get it at a lower price, but may be at risk of missing your train.

HEATHROW AIRPORT TO CAMBRIDGE STATION

Get to the tube station at London Heathrow and take the Piccadilly Line from Heathrow Terminals to King's Cross Station. From King's Cross Station, you can buy a train ticket to Cambridge Station from any one of the counters. The train ride should take about 1.5 hours.



LONDON KING'S CROSS STATION

GATWICK AIRPORT TO CAMBRIDGE STATION

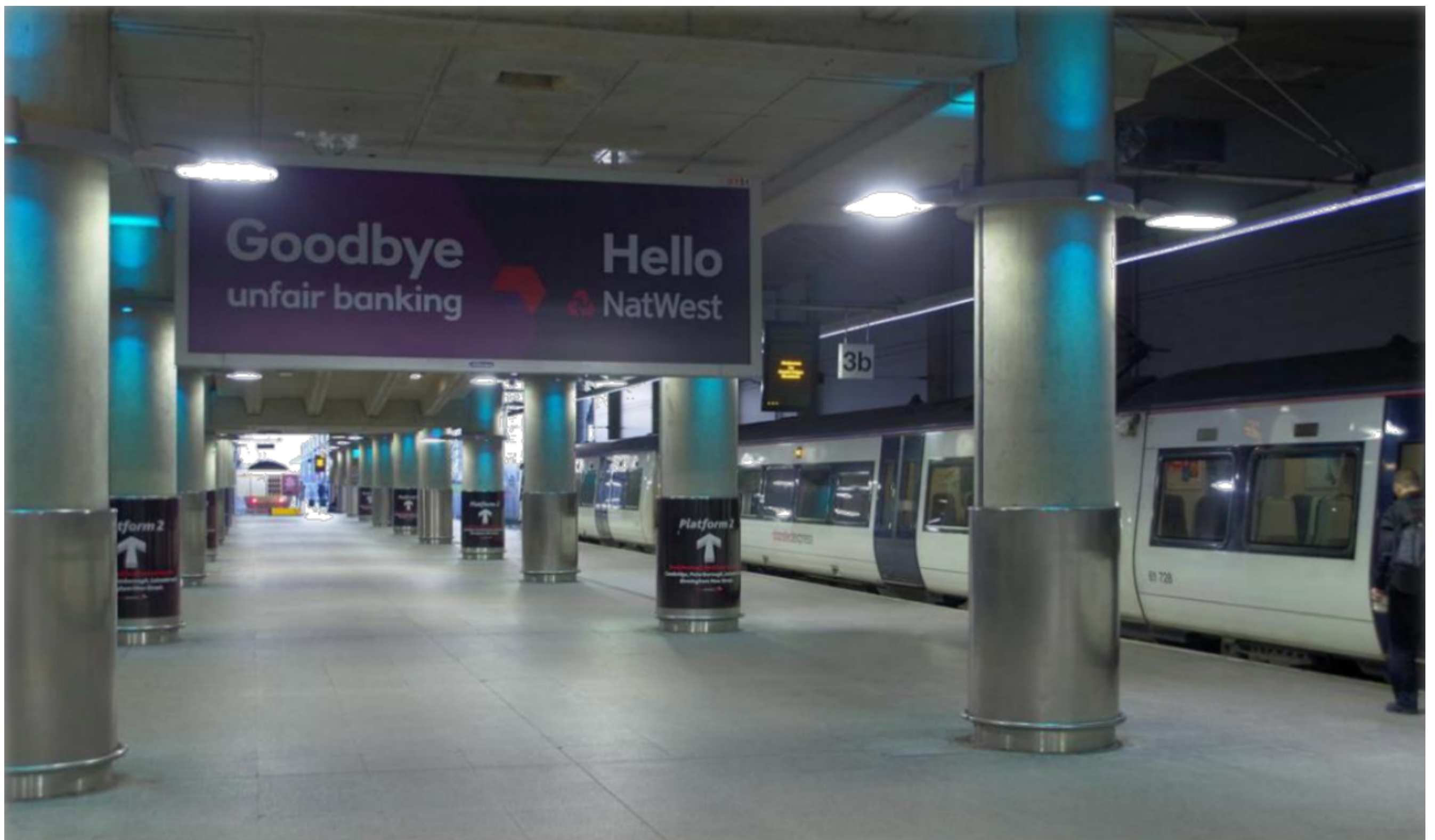
Getting to Cambridge from Gatwick via train may not be the most convenient. From Gatwick, you need to take a train (note: rail, not tube) from Gatwick Airport to London Victoria Station. After arriving at London Victoria Station, you need to transfer to the tube to get to London King's Cross Station, where you can buy a train ticket to Cambridge Station at one of the counters. As stated above, the train ride will take approximately 1.5 hours.

Note: This route is not recommended as it involves quite a few transfers, and London Victoria Station does not have lifts - you'll have to carry your luggage up the stairs which might be extremely difficult!

STANSTED AIRPORT TO CAMBRIDGE STATION

Getting to Cambridge from Stansted via train is extremely convenient. From Stansted, you do not need to transfer to another station. You simply need to head down the lift to the Stansted Station and buy a direct train ticket to Cambridge at one of the counters. The train ride will only take approximately 30 minutes.

Note: If you have the option of flying straight to Stansted and are planning on going straight to Cambridge when you land, this route is recommended!



STANSTED STATION

CAMBRIDGE TRAIN STATION TO ACCOMODATION

Once you've reached Cambridge Station, you can either walk or take a bus/taxi to your college or place of accommodation. If you are carrying a lot of luggage (or are alone), we do not recommend that you walk or take the bus (taking the bus in Cambridge can be confusing). Instead, we recommend that you take an Uber or a taxi to your destination (you may book one via Panther Taxi at 01223 715715 (www.panthertaxis.co.uk) or CamCab at 01223 704704 (www.camcab.co.uk)).

BUYING A RAILCARD

If you intend to travel by train often, it might be worthwhile for you to purchase a Railcard, which is available for anyone aged between 16 and 25, or 25 and in full-time study. It costs £30 per year or £70 for 3 years, and gives you 1/3 of the price off every train ticket you purchase. You can save a ton of money with a Railcard. You may purchase it at a train station or online at <https://www.railcard.co.uk/>, and you'll need a passport-sized photo and your identification/passport.

BY COACH (FROM HEATHROW, GATWICK, OR STANSTED)

National Express coaches are available from all airports to Cambridge City Centre. However, they usually take quite a fair bit longer than travelling by train (e.g. approximately 3 hours from Heathrow). But if you don't mind a slower trip, taking a coach can be quite relaxing since you don't have to manage your luggage (the driver will stow your bags), and the coach pick-up points are usually right outside the arrival hall of the relevant airport or terminal, meaning you don't have to make any transfers. You can search for a trip and purchase a coach ticket in advance at <http://www.nationalexpress.com/>.

As with National Rail, you can also purchase a Young Persons Coachcard (available for anyone aged between 16 and 26). It costs £10 per year or £25 for 3 years, and gives you 1/3 of the price off every coach ticket you purchase. You may purchase it at a train station or online at <http://www.nationalexpress.com/offers/coachcards.aspx>.

Once you've reached Cambridge City Centre, you can either walk or take a bus/taxi to your college or place of accommodation. If you are carrying a lot of luggage (or are alone), we do not recommend that you walk or take the bus (taking the bus in Cambridge can be especially confusing). Instead, we recommend that you take an Uber or a taxi to your destination (you may book one via Panther Taxi at 01223 715715 (www.panthertaxis.co.uk) or CamCab at 01223 704704 (www.camcab.co.uk)).

VISITING LONDON BEFORE GOING TO CAMBRIDGE

If you do plan on visiting London for the day before heading to Cambridge, and are planning on travelling by train to Cambridge, you can buy your train ticket ahead of time to get some discounts on attractions in London. You just need to present your train ticket to get a 2-for-1 offer - visit <https://www.daysoutguide.co.uk> for more information!

IN AND AROUND CAMBRIDGE

WALKING

Cambridge itself isn't impossibly big and it is certainly possible to walk to everywhere you will need to go. It is a simple matter to make use of Google Maps or the University Map (<https://map.cam.ac.uk/>), which more accurately points out places of interest within the University. If you do not yet have data set up, save all the Google Maps offline before you leave home. Alternatively, obtain a map from a tourist information centre or purchase one from the Cambridge University Press bookshop (www.cambridge.org/about-us/visit-bookshop). Free maps may also be up for grabs during Freshers' Week.

CYCLING

While it is possible to walk, most people in Cambridge get around by cycling - it is especially useful if your college is situated far from the city centre or your faculty. You can purchase a new bicycle from a shop; they typically cost between £100 and £150. However, there are often many promotions available during Freshers' Week. You can also buy used bicycles from seniors or from sellers on www.gumtree.co.uk. However, before getting a used one, do your due diligence to make sure you're getting something worthwhile!

Wherever you get your bicycle from, be sure to equip it with a set of lights (both front and back) and a sturdy lock (preferably a 'D' lock) to avoid cycle-theft. Both of these things are absolutely essential as cycling in the dark without either front or back lights entails a £50 fine, and cycle-theft in Cambridge is quite prevalent. You can register your bike in the National Cycle Database (www.bikeregister.com) to protect your bike.

Although helmets are not strictly compulsory, they are recommended, especially if you're not a strong cyclist. You should also consider purchasing mudguards when getting your bicycle - they'll keep you and your bike clean!

Bicycle shops near the city centre - these shops are convenient spots to get a bicycle, but they may not necessarily offer the best deal:

Halfords
1 Bridge Street
01223 350808

Ben Hayward Cycles
69 Trumpington Street
01223 352294

Cambridge Cycle Centre
8 Botolph Lane
01223 350808

Bicycle shops further away - these shops are a bit inconvenient to get to (especially since you don't have a bicycle yet), but you may be able to get a cheaper bike here:

Mike's Bikes
26-28 Mill Road
Road
01223 312591

Cycle King
195-197 Mill Road
01223 214999

Cambridge Station Cycles
Station Building, Station
01223 307125

BY BUS

If you are keen on travelling around Cambridge by bus (or if there is a need for you to), the bus services are efficient, and you can pick up a bus map during Freshers' Week to familiarise yourself with the routes. Or, you can visit:

- <https://www.cambridgeshire.gov.uk/residents/travel-roads-and-parking/buses/bus-timetables/>
- <https://www.cambridgeshire.gov.uk/residents/travel-roads-and-parking/buses>
- <https://www.cambridgeshire.gov.uk/residents/travel-roads-and-parking/buses>

DRIVING

While there are a few parking spaces in the city itself, parking space for students is usually not provided at College sites. Contact your College directly for any special requests regarding cars and parking.

COMMUNICATION

GETTING YOUR SIMCARD

MAKING CALLS IN THE UK

The UK's country code is +44, and if you arrive in the UK without a UK mobile phone line yet, you'll need to preface the number you are dialing with +44.

For example, the number given above for Panther Taxi is 01223 715715.

If you do not have a UK SIM card, you will have to dial +44 1223 715715; note that the zero at the beginning is dropped from the number. The zero is only necessary when you change to your UK SIM card, after which you will simply need to dial 01223 715715, without +44.

UK SIM CARDS

Assuming you have a phone which is usable in the UK (this is not a prevalent problem, but do note that mobile phones produced for different countries may not be usable in the UK - just check if there might be any issue, but this is unlikely), you can simply get a UK SIM from a number of operators:

VOXI (www.voxi.co.uk)

O2 (www.o2.co.uk/shop/sim-cards/)

EE (shop.ee.co.uk/sim-only)

Three (www.three.co.uk/Store/SIM/)

Lycamobile (www.lycamobile.co.uk/en/)

Giffgaff (www.giffgaff.com/)

Lebara (mobile.lebara.com/gb/en/)

The two key differences between these operators are pricing and connectivity. Depending on where you are in Cambridge or the rest of the UK, connectivity can vary largely. For example, Three tends to have poor reception in Cambridge but better reception in London and elsewhere in the UK.

We recommend checking with seniors in your college to find out which operator has the best connectivity in your college (where you'll likely be spending most of your time). From these operators, you may select a monthly contract (this is a good option if you intend to get a new contract phone) or a pay-as-you-go account (this is best if you like the flexibility of stopping your line whenever you return home).

RECOMMENDATION

If you don't need to get a new phone, VOXI is your best choice, it allows you to start and end your line from month to month with no cancellation fee or obligation to continue. Furthermore, VOXI packages often come with unlimited social media -- a blessing for students. Otherwise, Giffgaff is the best alternative.

You can order your SimCard before you arrive in the UK so it will have arrived in college for you to set up in your first few days in Cambridge. If you are planning to use your phone number from your home country initially, remember to contact your local provider to set up global roaming, so the costs will not be too high. We do recommend getting a UK SimCard -- it will be very handy.

SOCIAL MEDIA

In the UK, frequently-used social media include Instagram, Facebook and Snapchat, while TikTok and YouTube are also frequently used for media consumption.

At uni, you will find Facebook extremely useful -- it is the main tool used by societies and organizations to organize events, and people will be using it a lot to socialize and run campaigns. Download Facebook and sign up (if you haven't already) and make sure you follow ISC on Facebook and Instagram as well!

Here are the links:

<https://www.facebook.com/internationalstudentcampaign>

https://www.instagram.com/isc_cambridge/

WI-FI IN CAMBRIDGE

As mentioned above at Page 6, using your CRSid, you have access to the campus-wide network Eduroam and UniOfCam. However, Eduroam and UniOfCam is sometimes not reliable (differs from place to place).

Half of the colleges have their own Wi-Fi which you can make use of by buying a router usually sold (or given out by) the IT Department of each individual college while the other colleges will be relying on the University-wide Eduroam. If you are unsure of where or how to connect to your college's wi-fi, ask the IT department of your college!

ACCOMMODATION

DURING INTERNATIONAL FRESHERS' WEEK

Not all colleges allow early arrival. This year, the International Freshers' Week (IFW) will run from September 26th to October 2nd for one week. This year IFW events will all be in-person. You should check with your college about the earliest date they allow students to move in.

If they do not allow early arrival before October 2nd, you may book a room (bed and breakfast) in any one of the following colleges:

Sidney Sussex (<https://www.sid.cam.ac.uk/confer/accommodation/bookingindiv>)

St Catharine's (<http://www.caths.cam.ac.uk/conferences/bed-and-breakfast/make-booking>)

Churchill (<https://www.chu.cam.ac.uk/conferences/services/bandb/>)

For most students, we recommend booking a room in Sidney Sussex if you would like to come to Cambridge earlier than your allotted college move-in date. It is centrally located and is right next to one of the larger supermarkets (Sainsbury's) in Cambridge.

Due to changes, this year the colleges above may not provide accommodation at the requested dates.

If you are having trouble booking early accommodation, you can find external accommodation online, stay with your family in a hotel before you move in, or elect to only arrive for the later events in IFW. You can head to <http://www.booking.com/> to search for hotels or other lodging as necessary.

DURING ORDINARY TERM

All colleges in Cambridge provide accommodation to first year undergraduates, and almost all of them guarantee accommodation for all 3 years of your undergraduate course (sometimes providing offsite accommodation in second year). However, there are some colleges which may not provide accommodation for 2nd and 3rd years (you will have to manage this when the time comes).

Some colleges may also allow you to live outside college if you wish (typically in 2nd or 3rd years). Popular private accommodation choices include Student Castle and Castle Hill. These accommodations are typically better equipped than college accommodations and offer more comfort, but they are usually more expensive and you would miss out on the college living experience.

For postgraduates, accommodation is not always guaranteed; you will have to check with your college's accommodation office to be sure. For those living in college (which will be most), visit the porters' lodge upon arrival to register yourself and receive your University Card and keys.

BANK ACCOUNTS

VARIOUS BANKS AND BRANCH LOCATIONS

Most international students set up an account with one of the following banks:



ADDRESSES:

56 St Andrews Street, Cambridge CB2 3DA
23 Market Street, Cambridge CB2 3PA
36 Fitzroy Street, Cambridge CB1 1EW

WEBPAGES:

<https://personal.natwest.com/personal/current-accounts/international-student-account.html>



ADDRESSES:

9/11 St Andrews Street, Cambridge
CB2 3AX

WEBPAGES:

<https://www.barclays.co.uk/current-accounts/international-student-bank-account/>



ADDRESSES:

63-64 St Andrews Street, Cambridge
CB2 3BZ
62 Hills Road, Cambridge CB2 1L

WEBPAGES:

They do not have a bank account specifically for international students:
<https://www.hsbc.co.uk/current-accounts/products/basic-bank-account/>

LLOYDS BANK



ADDRESSES:

3 Sidney Street, Cambridge CB2 3HQ
Chesterton Road, Cambridge CB4 3AU

WEBPAGES:

<https://www.lloydsbank.com/current-accounts/all-accounts/student-account.html#collapse2-1499456163436>



ADDRESSES:

60, St Andrews Street, Cambridge
CB2 3RR

WEBPAGES:

They do not have a bank account specifically for international students:
<https://www.santander.co.uk/personal/current-accounts/basic-current-account>



ADDRESSES:

28 Trinity Street, Cambridge, CB2 1TB

WEBPAGES:

<https://personal.rbs.co.uk/personal/current-accounts/international-student-account.html>

For more guidance on which bank you should open an account with, check out this comprehensive webpage by Save the Student that compares all the terms and benefits offered by these different banks:

<https://www.savethestudent.org/international-students/top-international-bank-accounts-uk.html>

SETTING UP AN APPOINTMENT

Setting up a bank account isn't terribly difficult or troublesome, however, you will need to plan ahead in order to get it up and running as early as possible. To do so, you'll need to fill up an application for an international student account online (using the links given above for the various banks - do check out their features and benefits before deciding which you would rather set up) and pick a date and branch location for your appointment to set up your account. Try to do this before flying to the UK, and make sure you pick an appointment date and time when you will not miss out on freshers' events!

Generally, you'll be required to bring your passport, UCAS acceptance letter (or other offer letter for postgraduate students), a proof of residence (you can get this from your tutor in your college), your student ID, amongst other things. Make sure you bring all the documents listed when making your application, or they will turn you away!

HEALTH

REGISTERING WITH A GP

As a student on a course of 6 months or longer, you will be covered under the National Health Service (NHS). As such, upon arrival in Cambridge, you will need to register with a GP - there are many GPs in Cambridge and you can get a list of them from your porter, college tutor, or college nurse. Your college will give you more specific details on registration when you arrive. Registration with a GP is important to make sure your health is taken care of during term time, and it is vital for services such as COVID-19 vaccination.

It might be helpful to obtain a vaccination record from your home country and any detailed information of medications you take or your medical conditions so you will find it easier to fill out registration forms for Cambridge GPs and update them accordingly. After you have registered with the GP, you can phone them to check that registration is complete and obtain your NHS number.

MEDICATION

Due to the weather, it is common for incoming students and returning students to suffer from 'Freshers' Flu' during their first few weeks in Cambridge. Although your college will inform you on how to register with a general practitioner (GP) in Cambridge, it is important to note that GPs are not dispensaries - the GP appointment normally takes a week, the doctors merely prescribe the medication, and you have to go to a pharmacy (e.g. Boots Pharmacy at 28 Petty Cury, Cambridge CB2 3ND) to have it fulfilled. This is not the most efficient use of time when you're treating something relatively minor like a flu.

We recommend that you can bring or buy some readily-accessible medication to help deal with the flu, coughing, runny noses, mild fevers, body aches, and sore throats. For example, paracetamol (for body aches and fevers), chlorpheniramine (for runny nose and sneezing), ibuprofen (anti-inflammatory pain killer), codeine tablets (for coughing), amongst others. However, remember to get tested and self-quarantine if your symptom indicates possible COVID-19 infection.



INTERNATIONAL FRESHERS WEEK



TUESDAY 27 SEPT

2pm - 4:30pm: Punting

8pm - 12am: Pub crawl OR

Board game night

THURSDAY 29 SEPT

2pm - 4:30pm: Punting

10pm - late: MASH

SATURDAY 1 OCT

7pm - 9pm: International Formal

MONDAY 26 SEPT

9am - 12pm: Shopping trip & tour

3pm - 6pm: Mingling night + speed friending

WEDNESDAY 28 SEPT

9am - 12pm: Shopping trip and tour

8pm - 12am: Pub crawl OR Board game night

FRIDAY 30 SEPT

10am - 2pm: Scavenger Hunt

SUNDAY 2 OCT

Morning: Brunch



In addition to International Freshers' Week (IFW), ISC is also continuing International Families to give everyone more support and opportunities to make friends in the weeks before term starts!

INTERNATIONAL FAMILIES

After the huge success last year, international families are back! As we know the weeks leading up to Term are filled with questions, stress and even more worries, we want to provide you with a international family of international parents (current int'l Cambridge students) and siblings studying the same course as you from a different college and/or culture! We hope that this will give you a support system who understand the challenges of being an international, and also people you can talk to about your course and Cambridge life in general.



Signups are open here <https://forms.gle/eN3qkkNo6hxiqzy59>. Please follow our social media and join our Facebook group to get all of our updates!

Instagram: [@isc_cambridge](https://www.instagram.com/isc_cambridge) Facebook: [@internationalstudentcampaign](https://www.facebook.com/internationalstudentcampaign)
Facebook group link: www.facebook.com/groups/344277030563335/

PACKING AND SHOPPING

THINGS TO BRING AND THINGS TO BUY

THINGS TO BRING

STATIONERY

Stationery is considerably more expensive in the UK, and some brands of pens with which you are familiar may not be available there. All the choices are quite bland. It is recommended that you stock up on the stationery you like from home and bring it over with you. It would be useful to bring along:

Pens and refills (as many as you think you need, especially during exam term)

Highlighters (if you need them)

Mathematical sets and calculators (if you need them; note that for science students, only certain calculator models are approved for use during exams - make sure you check it before bringing one with you.)

Pencils and sharpeners or mechanical pencils and lead

FORMAL WEAR

For ladies, this could mean any number of things - semi-formal dresses for matriculation, or evening wear (cocktail dresses, jumpsuits, evening dress) for formal/black-tie events.

For the gents, this means a suit with a tie, a couple of formal shirts, and dress shoes. For black-tie events, you'll need to have a tuxedo and a bow-tie. However, this is not strictly necessary - formals do not require black-tie, but certain colleges do insist on black-tie (or even white-tie) for their May Balls.

WINTER AND RAIN WEAR

A light coat and a couple of sweaters from home will suffice till November, after which a wool or down-feather winter coat will be needed. The weather in the UK is notoriously wet - although it won't be too cold when you arrive in Cambridge. During Michaelmas, rain is constant and persistent. The good news however, is that the rain is generally light, especially if you're used to tropical rainfall. Nonetheless, we recommend that you bring a good umbrella or a waterproof coat. If you do not yet own a winter coat, it may be a better idea to purchase one in the UK as there is a wider range available and is often cheaper.

If you plan to cycle in Cambridge, bring along scarves and gloves to help keep yourself warm (your hands can get especially cold even when cycling). Long johns and thermal wear are generally not necessary for most people, however, if you are particularly sensitive to the cold, we would recommend bringing a set.

ELECTRONICS AND GADGETS

Do check with your college whether the electronics/gadgets you are bringing can be used in your room. High wattage appliances such as microwaves and fridges (unless they are of a particular size) are not allowed by some colleges. Some colleges (but not others!) also forbid rice cookers.

If you are the kind that prefers studying in your room, you might consider getting an additional screen or monitor for your computer - this does really help ease the squinting and struggle to read on your screen. This has been especially helpful during remote learning -- you can watch the lecture on one screen and take notes on the other. Screens in the UK can be quite pricey, and we do recommend you bring one with you if you have the luggage capacity (generally a 17 or 21-inch screen tightly bubble-wrapped should be sufficient). Also, a keyboard and mouse is recommended.

As some rooms have a limited number of power sockets, a multi-plug with switches may come in handy. A cheap one can be easily obtained from Argos/Sainsbury's and therefore it may not be necessary to bring it from home. However, if you prefer to have one with you immediately when you start unpacking, feel free to bring one. Also remember to buy an adapter for appliances with different socket shapes.

As mentioned above at page 16, your college will help you set up your Wi-Fi connection when you arrive - it is not necessary to bring a router; often they may not be configured properly and might not work anyway. However, do check with your college if you require a LAN cable for direct Ethernet connection.

TOILETRIES

Most brands of toiletries are available, but you should still bring some along small samples of shampoo, body wash, conditioner, toothpaste, and etc., to tide you over for the first few days. For a good gauge as to what is available, you can do a quick search on <https://www.boots.com/>, <https://www.superdrug.com/>. We do strongly recommend bringing along lip balm and moisturiser which will help prevent your lips and skin from cracking - the air in the UK is extremely dry.

STORE-CUPBOARD COMFORT FOOD

We do recommend that you bring some food from home which can be kept and which cannot be found in the UK. For example, pre-mixes, sauces, a particular brand of instant ramen, etc. However, bear in mind that meat products are not allowed to enter UK from outside EU. For a good gauge as to what is available in Cambridge, you can do a quick search on <http://www.ocado.com/>, <http://www.waitrose.com/>, or <http://www.sainsburys.co.uk/>. In the later section you will also find supermarkets in Cambridge which you can buy comfort food from.

THINGS TO BUY

COLLEGE GOWN AND PUFFER

There are 2 main shops which sell academic gowns:

RYDER AND AMIES

22 King's Parade, Cambridge CB2 1SP

01223 350371

www.ryderamies.co.uk

EDE AND RAVENSCROFT

70-72 Trumpington St, Cambridge CB2 1RJ

01223

350048

<https://shop.edeandravenscroft.com>

Each college has their own unique academic gown, and they do vary slightly in pricing. Gowns range from approximately £35 to £50 at Ryder and Amies, and approximately £45 to £60 at Ede and Ravenscroft. The ones from Ede and Ravenscroft are of slightly better quality but are for the most part indistinguishable. Some colleges may also sell gowns at their porters' lodge.

Furthermore, you can also buy college puffer jackets with your initials from Ryder and Amies. Sometimes, these will be bulk-purchased by your JCR or MCR (undergraduate and graduate student unions so please look out for order requests). These puffer jackets are around £40 and they are generally of good quality so they can last three winters.

WHERE TO BUY WHAT

Remember there is also online shopping -- sign up to [Unidays](#), [Student Beans](#) and [Percent](#) to obtain student-specific discounts! (Trust me it will save you so much money)

SUPERMARKETS (CHEAPEST TO MOST EXPENSIVE)

Aldi (very cheap if not the cheapest); Tesco / Tesco Express;
Sainsbury's Eddington (massive one)/ Main Sainsbury's / Sainsbury's local;
Co-op (Hill's road); M&S / Waitrose @ Grafton (the most expensive)



The green flags on the above map are the locations of various supermarkets, with the red location mark being the main Sainsbury opposite Sidney Sussex College.

DUVETS/BEDDING

TK Maxx (very cheap)

Primark (cheap, but farther away)

M&S (comfortable, fair prices, not the cheapest)

John Lewis (can be slightly more expensive)



STATIONERY

Ryman (next to the main Sainsbury on Sidney Street, UK chain supermarket, more expensive)

WHSmith (a large store near Market Square that sells stationery)

Wilko (a cheap supermarket in the Grafton Centre that sells various things such as plastic boxes for storage, stationery, kitchenware, albums, etc)

KITCHENWARE

John Lewis (you can find almost everything there, though it can be pricey)

Wilko (a much cheaper store, but a bit far from the city center)

Sainsbury's (more cleaning tools than pots and frying pans)

Lakeland (expensive, higher quality, located on Sidney Street)

MEDICINES/COSMETICS

Boots (one of the biggest chains that sells various brands of cosmetics and medicines; you can also collect prescriptions and even print photos there)

Superdrug (mainly for cheaper cosmetic brands and small toiletries, such as combs, hair bands, nail polish removers etc.)

BOOKS

Heffers / Waterstones

G. David Bookseller (second hand books)

RESTAURANTS

Chinese/Cantonese: Golden House (takeaway); HK Fusion; Seven Days; Yim Wah Express; Café Oriental (very good dumplings); Gourmet House

French: Côte Brasserie

Generic Halal: Zi's

Greek: Gardenia (Gardies) (mostly halal)

Indian: The Tiffin Truck, Tawa Kitchen

Italian: Bella Italia, Pizza Express, Zizzi, Franco Manca's, Don Pasquale, De Luca Cucina and Bar

Japanese: Wasabi, Yo! Sushi, Sticks'n'Sushi, Sushimania, itsu, Kineya Muugimaru



Korean: Yori, Bibimbap House, Little Seoul, Kim's Bulgogi

Lebanese: Lagona (halal)

Mexican: Nanna Mexico (chicken is halal), Las Iguanas

Spanish: Tabanco, Tu Casa Tapas



Thai: Sala Thong, Thaikhun, Baan Thai Street Food, Thai food truck in market

Vietnamese: Pho, Thanh Binh

Fried chicken: Van of Life (THE place after a night out)

*Note: The restaurants above came from student recommendations, no sponsorship involved.

SUPERMARKETS FOR COMFORT FOOD

Chinese / Asian:

Retour (Massive, next to Train Station / also online)

Ocean (Mill Road)

Jia Mart (Grafton / Regent Street / also on Deliveroo / Hungary Panda)

Malaysian / Singaporean:

Cho Mee Supermarket (Mill Road)

Korean:

Seoul Plaza (Mill Road)

Indian:

Al-Amin (Mill Road)

MENTAL HEALTH AWARENESS

TAKING CARE OF YOURSELF BY STUDENT MINDS CAMBRIDGE



Starting at Cambridge can be particularly stressful for international students - leaving home to study in a foreign country sometimes for the first time, maybe even staying miles away from family and friends, and experiencing cultural shock in what can be a completely unfamiliar environment. Academic and interpersonal factors can also have an impact on your mental health. The difficulties you might face are common amongst many international students, and there are safeguards and resources available to make the transition as easy as possible. This guide is to let you know about mental health resources, and where you can go if you want some support, whenever you want.

It is normal to feel homesick after coming to Cambridge, especially if this is the first time you are away from home for an extended period of time. But keep in mind that you are not alone, almost every international student experiences homesickness at some point, so don't panic or worry if this happens to you. It can be nice to join societies with your cultural background, where you can all get together to do things you're used to doing at home (for a list, see www.cambridgesu.co.uk/opportunities/societies/societies/ or meet them at the Virtual Freshers' Fair). Sometimes talking to people who share the same cultural background can let you feel "connected" and at ease.

Sometimes, meeting new people can be distressing too, and it's important to remember that you don't need to rush into making loads of new friends if you don't want to. Many people might find their groups only later into their Cambridge journey, and so you shouldn't feel stressed if you don't immediately fall into a group. If you ever do feel lonely, or just want to have a chat with someone, try to come along to one of Student Minds Cambridge's events where you will have a chance to socialise in a relaxed environment.

You may begin to feel a number of negative emotions which often (but not always) start due to homesickness. You can try the following or seek help in the places listed in last section (5. Seek help) if this happens to you.

1. Talk to people:

Speak to your family or friends about your problems and concerns. If you don't want to disclose everything to people you know, a short catch up may also free you from the anxious thoughts that constantly disturb you. You may also want to talk to your Student Minds College Reps, Welfare Reps, and Nightline student volunteers for informal, but private support.

2. Disconnect from social media:

Some anxious thoughts and feelings stem from FOMO - fear of missing out. Leaving your phone and other electronic devices alone for a couple of hours can actually let you disconnect from the outside world and isolate you from the noises that bother you.

3. Do some gentle exercise:

Go for a stroll or do some gentle exercise to relax your mind and body. Practising mindfulness may also help to calm you down when you are overwhelmed by negative thoughts.

4. Review and assess your stress:

Think about what causes you to feel stressed and rate them by grading them in order of importance or effect to you. Try to find ways and activities to reduce each of these sources of stress and jot them down so you can refer back to the list whenever you feel bad.

5. Seek help:

Sometimes, you might not be able to handle these negative emotions alone. If you feel like you require proper help, you can talk to your College Nurse, Tutor, Chaplain, GP, University Counselling Service, Student Unions' Advice Service, and SU Welfare & Community Officer.

Further details on where to seek help in Cambridge:

COLLEGE

Personal Tutors JCR/MCR Welfare Reps College Nurse Chaplain
Porters

UNIVERSITY

University Counselling Service (UCS)

Students' Unions' Advice Service

Disability Resource Centre

STUDENT INITIATIVES

Nightline: 01223 744444 (7pm-7am during term time)

EXTERNAL SUPPORT

Cambridge Women's Aid: 01223 361214

Cambridge Rape Crisis: 01223 245888

Switchboard LGBT+: 0300 330 0630 - support for LGBT+

Beat: 0808 801 0677 - support for eating disorders.

Cruse Bereavement Care: 0808 808 1677 - support for those who have lost a loved one

Samaritans: 116 123 - 24/7 helpline, non-directive listening

Lifecraft: 0808 808 2121 - 7pm-11pm helpline based in Cambridge, non-directive listening

Mind: 0300 123 3393 - particularly good for finding information about mental illnesses, self-care tips, and tips for supporting friends and family.

SANE: 0300 304 7000 - helpline 4.30pm - 10.30pm.

Papyrus: 0800 068 41 41 - helpline particularly for young people having suicidal thoughts

IN AN EMERGENCY:

PORTERS ARE 24/7, NHS 111 PRESS OPTION 2.

You may also want to read this Student Support Guide (at <https://www.findsupportcam.com/>) prepared by Student Minds Cambridge. It includes ways of self-care, supporting others and where to look for mental health support in Cambridge. Feel free to also keep in touch with Student Minds Cambridge (at <https://www.facebook.com/StudentMindsBridge/>), who regularly update mental health related information, organise events to promote mental health awareness, and can also signpost you to useful resources and support systems to improve your mental wellbeing.

GENERAL ACADEMIC INFORMATION

ACADEMICS IN CAMBRIDGE

LECTURES

Lectures are normally held in various lecture theatres around Cambridge. You will be provided with more information such as lecture timetables using your CRSIDs on www.timetable.cam.ac.uk by early October. Lecture attendance is not recorded, but they are the backbone of any university course (plus they're what you're paying for)- so do attend them, whether they are in-person or on-line!

SUPERVISIONS

Supervisions are a mode of teaching rather unique to Cambridge, and are a valuable part of the learning experience. The sessions usually involve anywhere from 1-10 students with one teacher - the 'supervisor' - and last around an hour, where you will discuss your work - for example an essay, or problem sheet - which you would've been set and (hopefully!) completed beforehand. These sessions are designed with the intent of allowing you to fully discuss your thoughts, questions and ideas with your supervisor, and can be hugely rewarding! That being said, each supervision can take a couple of hours of preparation (whether that's completing an essay, pre-reading, or problem sheets), and it is up to you to do the work necessary in order to get the most out of your supervisions.

For someone new to Cambridge, the idea of having a supervision can be incredibly intimidating - what if you don't know the answer?? Fear not! Firstly, everyone will be in the same shoes - even those who act confident - no one's had the experience before, and they're probably all as clueless as you are. Secondly, some supervisors may come off as intense or even a bit mean, but they know you're new to this! So the best you can do is to do any work you are set (but don't stress if you can't - it's supposed to be hard!), and go in with an open mind - just like an entrance interview, they're not looking for someone who always knows the answer, but rather someone who's ready to learn.

Whilst it can vary between departments, first year supervisions are mostly organised by your college Director of Studies. They will put you in contact with your supervisor, and from there it is your responsibility to organise your meet ups - some supervisors set a fixed weekly schedule, whilst others are more flexible.

DEGREE CLASSIFICATION

You'll notice that your examinations are divided up into parts, each known as a "Tripos". A Tripos is simply a fancy name that Cambridge gives to a cluster of examinations in a particular subject (e.g. Geography Tripos Part II, Manufacturing Engineering Tripos Part IIB, Mathematics Tripos Part III, and etc.). Each Tripos is given its own individual classification (First, Second-Upper, Second-Lower, or Third Class), and your degree does not have an overall classification. However, you can refer to the individual classes you attained in each part of your Tripos - if you got a First in all 3 parts, you can say you've got a "Triple First".

TERM DATES

UNDERGRADUATE STUDENTS

Michaelmas Term: Tuesday 4 October 2022 - Friday, 2 December 2022

Lent Term: Tuesday, 17 January 2022 - Friday, 17 March 2022

Easter Term: Tuesday, 25 April 2022 - Friday, 16 June 2022

* Take note that the Cambridge week starts on Thursday and ends on Wednesday (lectures typically start on the first Thursday of full term and end on the last Wednesday). However, as can be seen above, full term begins on Tuesdays and ends on Fridays. Even more confusingly, supervision cycles typically start on Mondays and end on Sundays. (Yea, no one really gets it, just go with the flow!)

POSTGRADUATE STUDENTS

Note that the above term dates do not necessarily apply to postgraduate students. Postgraduate students operate on the basis of the academic year which extends beyond the end of the Easter Term. The Academic year commences on 1st October and finishes on 30th September each year. For more information, head to: <https://www.cam.ac.uk/about-the-university/term-dates-and-calendars>

WORDS AND PHRASES IN CAMBRIDGE

"You alright?"

A pleasantry in England; it's just their way of saying hello. You shouldn't feel obliged to explain if you are in fact "alright" or not. You can simply say "Yeah, you?" and continue walking on (they'll probably reply with "Yeah").

Backs

The back of colleges along the River Cam, most with superb views of the river. Especially beautiful when flowers blossom in summer. Popular for walks and picnics.

Bedder

Cleaners at Cambridge colleges, from when students had beds made for them. Now, they empty your bin every morning (and change your sheets or clean your room, depending on your college). Please be nice to your bedder as they can be great friends!

Blue

A title for people who play in University (Varsity) matches against Oxford. You'll often hear it when a person is referred to as a "Cambridge Blue".

Bop

Parties typically hosted by your College JCR with loud music, dancing, drinks and usually a theme in a crowded warm room.

Boatie (Pronounce "bow-tee")

Someone whose waking hours revolve around rowing and more rowing. Known for waking up at insane hours to train. Topic of conversations are limited to, you guessed it, rowing.

Bumps

Bi-annual thrilling event where all college rowing crews line up in accordance with the previous year's final rankings and chase each other up the river, attempting to bump (overtake) each other.

Buttery

A space in college where food is served to students. Also known as "hall" in some colleges. Not to be confused with dining hall in some colleges.

Cambs/Cam

Short form of Cambridge

Camfess

University Confessions Page on Facebook. Cambridge has lots of other pages like Crushbridge, Kindbridge, Worldbridge, Queerbridge, etc.

Catz

Nickname for St. Catherine's College

Cheers

An expression of appreciation - the British substitute for the polite 'thanks'.

Compsci

Pronounced "kom-skee". Nickname for Computer Science students

Courts

Manicured grass patches in college. Not to be trampled on by students in most colleges. To be caught is to risk the wrath of the porters.

Cindies

Officially Ballare but Cindies to students. Wednesday Cindies is THE night out in Cambridge. Has since shut down from COVID, but you will hear this iconic night reminisced by third years.

CUSU

The former name for Cambridge University Student Union - it is now Cambridge SU.

DoS (Director of Studies)

Fellow(s) from your college who is responsible for overseeing your academic progress. You will usually have a meeting with them once a term. Best to be avoided if you do not want any nagging or pep-talk to work harder, though some can be lovely.

Emma

Nickname for Emmanuel College

Ents

Entertainment. Members of your College JCR that organise bops and parties.

Faff

[Verb] If someone tells you to stop faffing around, they want you to stop clowning around.

[Noun] An unnecessary, over-complicated, or troublesome task, especially one perceived as a waste of time. "I hate doing the dishes every night, it's such a faff."

Fellows

Academics who work, and in some cases, live in a college. They are a notch above students on the college social ladder and enjoy the right to walk on the grass. They also get to sit at the high table at hall and are served better food. Some Fellows are also supervisors or DoSes.

Fitz

Nickname for Fitzwilliam College

Formal Hall (aka Formals)

Dressed up dinner with good food and wine (usually) held in Hall, sometimes requiring gowns (although highly variable).

Full Term

The length of time each term for which you have to be resident in Cambridge - you need to spend a minimum number of nights in Cambridge each term to "keep term". For example, Full Michaelmas Term in 2021 will be from Tuesday 5th October 2021 - Friday 3rd December 2021.

Glitterbomb

Tuesday nights out at Life (Vinyl) playing all the queer hits. Drag queens perform weekly and it is THE night for LGBTQ+ folks!

Good shout

"That's a good shout" as in "That's a good idea"

"Go on"

What someone will say if they want you to continue speaking / another way of saying yes if someone asks a question

Gyp

Name for a kitchen in most colleges. Sometimes with odd rules like "no cooking after 10pm" and "no frying".

Hall

Dining hall. Place where food is served at meal times. Also called and acts as a buttery in some colleges.

Hill colleges

Group of colleges (Medwards, Fitz, Churchill, Lucy Cav, St. Eddies) located on a hill slightly further out of town

Hobs

Stoves. Unfortunately, not all gyps have hobs.

JCR/MCR

Junior/Middle Common/Combination Room.

1. Undergraduate/Postgraduate section of the college students' union, although some colleges might have it named something else - typically referred to as _ _ SU.
2. Student leisure area where you and your friends can watch football/rugby matches or lounge in armchairs/bean-bags.

KFC

Kitchen Fixed Charge: college canteen subsidy paid by student members of most Cambridge colleges. Unfortunately almost impossible to get out of paying, even if you never eat in Hall.

Knackered

As in “completely knackered”, meaning very tired.

Life (clubbing)

The club is named “Vinyl”, but referred to as Life by students. Sunday Life is one of Cambridge’s most popular club nights for cheesy music.

Mainsbury’s

The large Sainsbury’s on Sidney Street.

Master

The person who nominally heads the college. They always have a Master’s Lodge which is often beautifully decorated and usually one of the nicest parts of any college.

Mathmo

Pronounced “math-mow”. Cambridge nickname for Mathematics students.

May Ball/June Event

When colleges host huge parties during May Week! Vast amounts of drink, food, entertainment, and performances from 10pm to 6am the next day. Prices for tickets range between £80 (June Event) to £100-250 (May Ball). Also, some colleges host Spring Balls and Winter Balls in Lent and Michaelmas respectively.

Medwards

Nickname for Murray Edwards College

Moodle

A Virtual Learning Environment used by universities such as Cambridge.

Natsci

Pronounced “nat-skee”. Nickname for Natural Sciences students.

Orgasm Bridge

Bridge near Trinity Hall with steep upward bend. Cyclists must pedal hard up the incline and then zoom down the other side.

Panopto

Lecture recording service used in Cambridge, quite possibly a student’s best friend (or worst enemy).

Peak

Refers to something that is bad/unlucky (e.g. this Saturday supo is a bit peak)

Pissed

Slang for Drunk

Pidge

Your pigeon hole where most of your work, documents, and mail are placed.

Plodge

Porter's Lodge, where you can find a Porter 24/7 in every single college.

Porter

Warden on duty in college. In charge of some areas of discipline, especially during bops. They also sort your mail and packages. Other duties include talking at great length about past students, breaking up parties, and evicting mad axe murderers from college. Don't expect them to help you with your bags though! They are often very nice, friendly people with a sharp sense of humour who will help you out if you are lost or confused.

Punts

Long boats manned by poles, especially famous in Oxbridge. Can be rented out by students for a spin on the River Cam for under £20/hour. Remember to present your student card!

Rate

As in "I rate it." What someone says when they liked/enjoyed something.

Senior Tutor

Holds overall responsibility for student welfare in the college. Usually a stern looking person who speaks to you during Freshers' week about behaving yourself.

Sidge

Nickname for Sidgwick Site where many lectures are held.

Stash

The Cambridge term for College/Uni branded clothing (like fleeces, puffers, etc.)

Supo

Cambridge slang for supervisions

The Other Place

What many Cambridge students call Oxford

Tit-Hall

Nickname for Trinity Hall College

Tripes

Pronounced "try-poss", sometimes jokingly named as 'try pass'. Some say it's the hardest exam you'll ever have to take. The name derives from the archaic practice involving the presentation of a leg of a 'three-legged stool' in each year's exam.

Tutor

You will be assigned a tutor within your college who is in a different subject to you. The person to approach for any concerns outside of academics, including pastoral, finances, and mental health support.

SEE YOU SOON!



isc-chair@cusu.cam.ac.uk



[@isc_cambridge](https://www.instagram.com/@isc_cambridge)



[@internationalstudentcampaign](https://www.facebook.com/@internationalstudentcampaign)



INTERNATIONAL
STUDENTS'
CAMPAIGN